

## Rates

Being geo-professionals ourselves, LandTech understands the frustrations of additional unknown charges being added to invoices for CPT testing that all amount to a higher expense than initially thought. That's why we have elected to keep our fee structure simple and transparent for ease of doing business with us. Our standard rates are charged as per the below, applicable for one year from 1<sup>st</sup> June 2022:

- Project Management and H&S = \$250+GST
- Establishment (within 1hr drive from offices) = \$300+GST
- Underground Service Clearance = \$500+GST
- Testing (CPTu or DPSH) = \$400+GST/hr
- Data Processing (for up to 6 tests) = \$150+GST

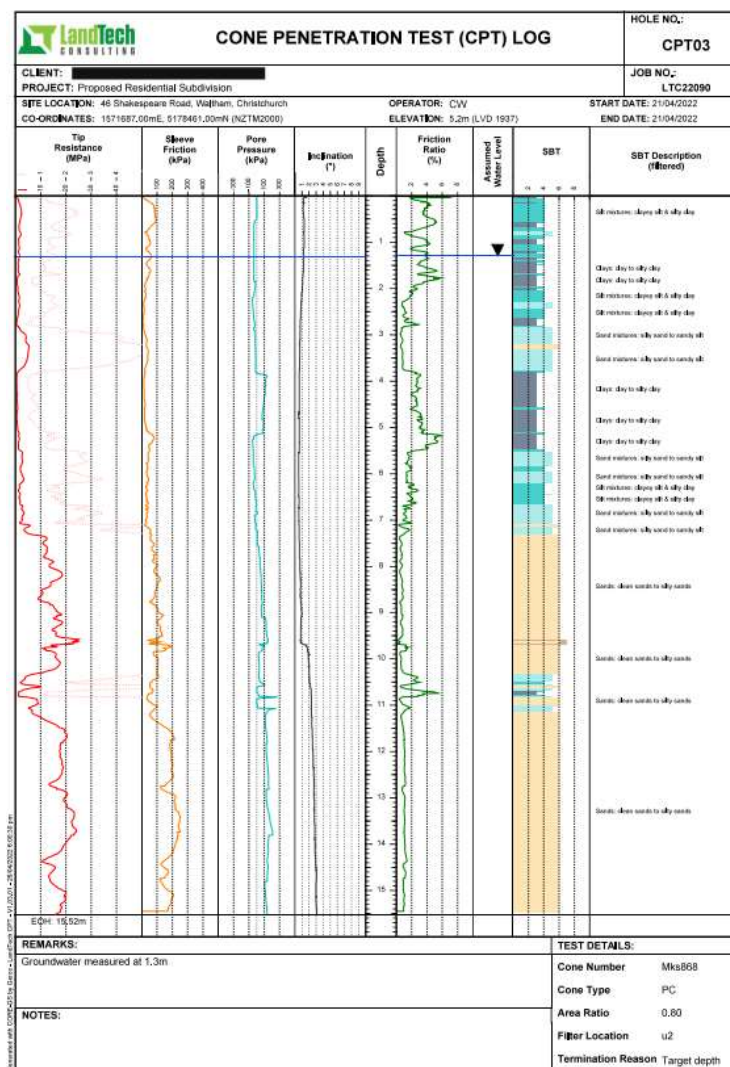
On a typical site with 4-6 x 20m CPTu tests completed within one day, total fees would approximate \$4,400+GST. We would generally keep our charged fees the same as our quotes, unless exceptional difficulties were experienced on site or instructions received requesting changes to scope.

## Software & Deliverables

LandTech runs the industry leading CPTu logging software CoreGS, by locally owner and operated NZ company Geroc Solutions Ltd.

Deliverables are raw test data in excel format post-processing, AGS4 files if required, professional CPTu and DPSH test reports in pdf, KML files showing GPS measured positions of test locations.

LandTech also has specialist geotechnical software from Geologismiki for liquefaction analysis (Cliq and LiqSV) and static settlement (CPeTiT). Should you require interpretation and analysis of the CPT or DPSH data then we can do so at an additional fee.



We also offer other geotechnical services such as hand augering, nuclear densometer testing, expansive soil lab testing, and construction inspections.

**Please contact us for a free non-obligation quote.**



**LandTech**  
CONSULTING

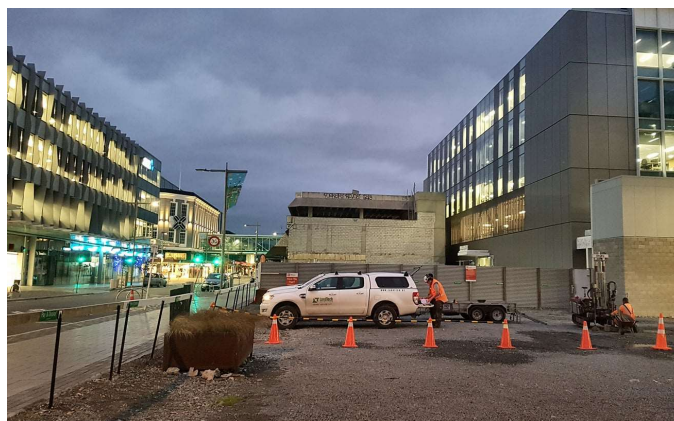
Now offering CPTu testing across New Zealand





LandTech Consulting Ltd has recently invested in two purpose built Cone Penetration Test (CPT) specialist rigs for our Auckland and Christchurch offices. The machines are manufactured by Pagani Geotechnical Equipment in Italy, and adjusted for our local environmental and geologic conditions. Pagani have been making CPT rigs since 1978 and are the go to machines for use in New Zealand due to their small size and manoeuvrability.

We have purchased Pagani's mid range machines, the TG 63-150. This allows both static (ie constant push via hydraulic ram for CPT testing) and dynamic (ie drop weight for Dynamic Probe – Super Heavy; DPSH testing) applications. The machines come equipped to conduct up to 30m of CPTu (ie piezocone) or DPSH testing. The DPSH uses the same hammer weight and drop height as a standard SPT test (63.5kg, 750mm free fall, approx 78% efficiency), but with continuous testing with depth.



## Testing Services

- **CPTu testing**  
Constant rate of penetration testing measuring tip resistance, sleeve friction, and porewater pressure. Used for liquefaction analysis, static settlement evaluation, soil type behaviour assessment, spring stiffness, design parameter determination.
- **DPSH testing**  
Constant measurement of blow counts per 100mm penetration with equivalent SPT hammer weight and drop height, but with energy efficiency of 78% (ie energy ratio of 1.3 to convert to N60). To penetrate upper and intermediate dense layers where CPT refusal is encountered, or to prove dense founding layer.
- **GPR and Cable locating**  
Conducted prior to testing along with gathering of underground utility plans to ensure underground services are avoided during testing.
- **Groundwater, Dissipation, and Piezometers**  
Test holes are generally dipped at the completion of testing to measure groundwater levels then backfilled with bentonite. Piezometers can be installed, and dissipation tests conducted for additional groundwater information.



### Postal Address:

PO Box 104137  
Lincoln North  
Auckland 0654

### Christchurch Office:

11B Carlyle Street  
Sydenham  
Christchurch 8023

Ph (03) 390 1371

### Email:

[info@landtech.nz](mailto:info@landtech.nz)

### Website:

[www.landtech.nz](http://www.landtech.nz)

### Auckland Office:

9B Collard Place  
Henderson  
Auckland 2241

Ph (09) 930 9334

